

Homework Planners

- Classroom teachers should Issue clear instructions to pupils when setting homework
- Pupils should record the homework in their planners and when it is due Form tutors/class teachers/parents should monitor that homework is written in the planners
- Parents can use the planners as a liaison link with the school

Parents

Parents play a key role in the education of their children. As pupils progress through secondary school, parents can provide a supportive environment in which the young person can develop the necessary study skills to move towards independent learning. Our homework policy takes account of *parents as partners* in learning.

Support and Sanctions

Although it is recognised that homework is best done at home, support is provided in school. Every lunchtime a supervised session is available to all pupils. Procedures for pupils persistently not handing homework in are as follows:

A sanction may be given by a classroom teacher as appropriate.

If the problem still persists, a classroom teacher may refer a pupil to the Curriculum Leader who may issue them with a further sanction at departmental level.

If the problem still persists, a Curriculum Leader may place a pupil in the SLT detention which takes place on a Friday evening.

Helpful Websites

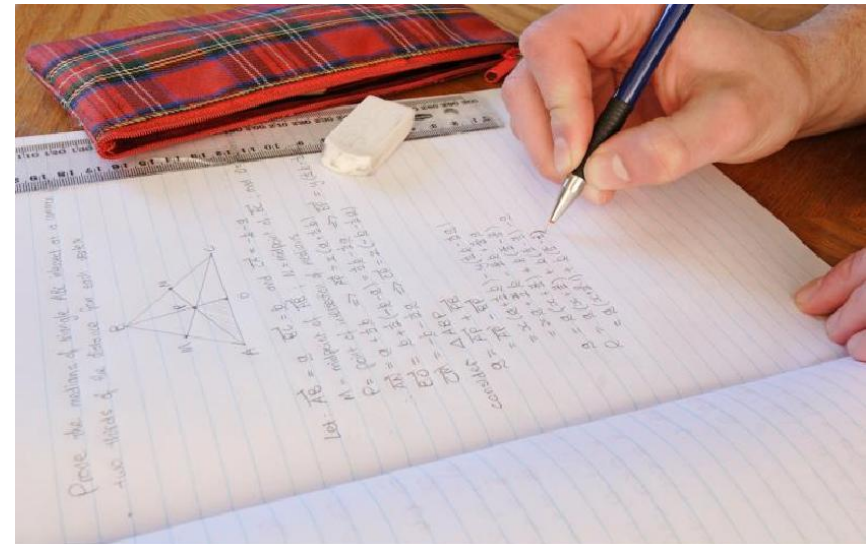
recuthies.co.uk
channel4learning.com/apps/
homeworkhigh
bbc.co.uk/learningzone/clips/
mymaths.co.uk
schoolhistory.co.uk
geographyteachingtoday.co.uk
chompchomp.com

linguascope.com
atantot.com
technologystudent.com
musictheory.net
bbc.co.uk/blast/music_audio
docbrown.info/
kerboodle.com



St Bede's Catholic High School

Homework Policy



Overarching statement

Homework is a valuable way of extending learning beyond the classroom, providing the opportunity for a range of tasks to be carried out which help embed learning. Homework is effective when it is used to extend and enrich learning and when it builds on what has been learnt in the lesson. Importantly it should be enjoyable.

We will endeavour to set homework which:

- is useful (that expands learning time)
- is relevant (that is applicable to pupils' lives)
- makes use of the fact that it is *homework* (captures the world beyond school)

J. Stern

A Definition

Homework is learning that is “relevant takes place away from the classroom ... and primarily the responsibility of the learner”. (MacBeath and Turner)

Rationale

Learning at home is an essential part of good education. Regular homework is important. It gives pupils the opportunity to practise for themselves the tasks done in class and contributes towards improving a range of important skills. It builds confidence and assists young people to personalise their learning. It allows children to work at a pace which suits them and their ability.

Aims

- To encourage pupils to take more responsibility for their own learning together with the development of organisational and study skills and workload management
- To promote self-reliance and self-confidence and encourage the habit of independent learning
- To widen the learning experience by encouraging pupils to use materials and sources of information not available in the classroom
- To assist pupils preparing for national qualifications to meet deadlines and target dates

Effective Homework

To be effective homework should be:

- Varied and interesting
- Appropriate to the needs and abilities of the pupil well explained and objective-led
- Relevant to the ongoing work of the class or group manageable within a reasonable amount of time
- Recognised and rewarded by meaningful feedback given as appropriate

Learning Programme

The departmental Learning Programmes outline recommended homework activities for each subject every half term. The assessment of these tasks will help to track the progress being made by individual pupils. The Learning Programmes can be accessed via the school's website.

Appropriate Tasks

Tasks should have a clear objective, linked to programme of learning. Staff should be careful to ensure that homework time is not regularly used simply for "finishing off" work carried out in class. This can often place too heavy a burden on some children and too light a demand on others. Middle Leaders and the Senior Leadership Team should ensure that the overall homework programme is balanced in the type and scale of tasks and manageable for both pupils and teachers.

Time Allocation

The intrinsic value of homework activities is far more important than the precise amount of time devoted to them. However, the school has broad expectations about how much time it is reasonable for pupils to spend on homework. The nature of the homework task and the amount will vary with the age, ability and needs of the pupil. It is impossible to give an exact allocation of time that a child might spend on homework because some take longer than others.

The following guide might be helpful:

Years 7-8	Year 9	Years 10-11
45-90	1-2	1½- 2½
<i>mins per day</i>	<i>hours per day</i>	<i>hours per day</i>

Homework Timetable

A Homework Timetable will be published at the beginning of each academic year. This will outline suggested days by which pupils are to be given homework in specific subjects. This will be available via the school's website.